

# Lynx 100C x 1590

## 100 Series Conventional Waterborne Adhesive Setup

The Lynx 100C x 1590 is a high quality conventional air spray gun designed for glue/adhesive applications of all types. The fluid nozzle and air cap are engineered to prevent product shearing. This gun comes standard with stainless steel fluid passages.

## Lynx 100C x 1590

### Features

- Forged Aluminum Body
- Stainless Steel Fluid Passages
- Special Air Cap and Fluid Nozzle Prevent Product Shearing
- Designed for Waterborne Adhesives
- Requires 12.5 CFM with 1590 Setup



## Lynx 100C x 1590

*"Conventional Dependability"*

### Available Outfits

#### 2 Quart Outfits

(Includes 5' Hose Assemblies)



**2 Quart  
(Bandit)**

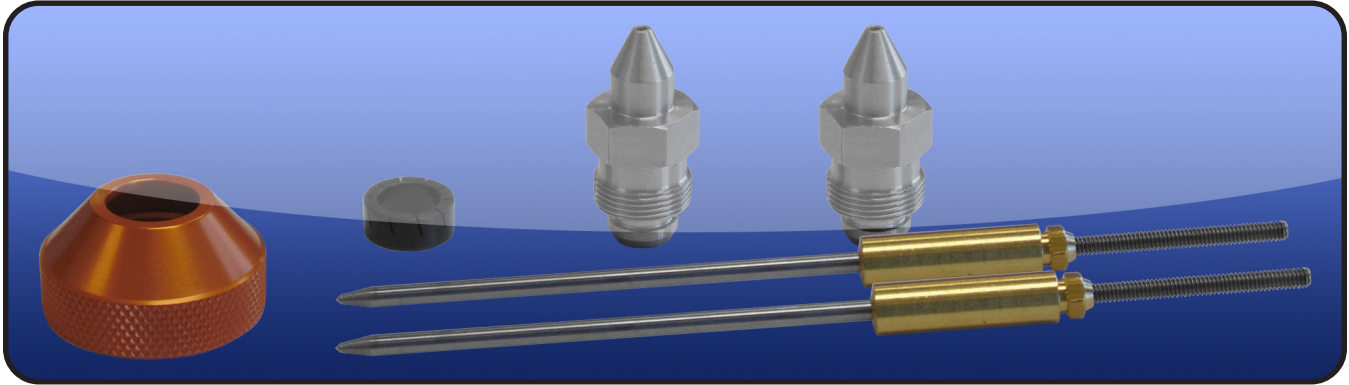
**OL100C x 18-1590-600**

#### Tank Outfits

Tank Outfits Include 25' Hose Assemblies and are available in 2.5 gal, 5 gal, 10 gal, 12.5 gal and 15 gal sizes.

(Includes 25' Hose Assemblies)





**Lynx**

**Lynx 100C x 1590**

*Available with a 0.8 mm or 1.8 mm Setup*

**Panther 100G x 1590**

*Setup Also Available with the Teflon Coated Panther Body for Easy Clean Up*